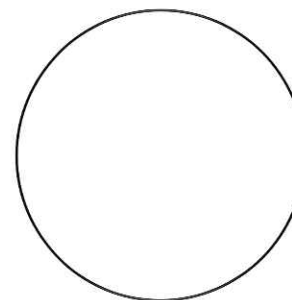
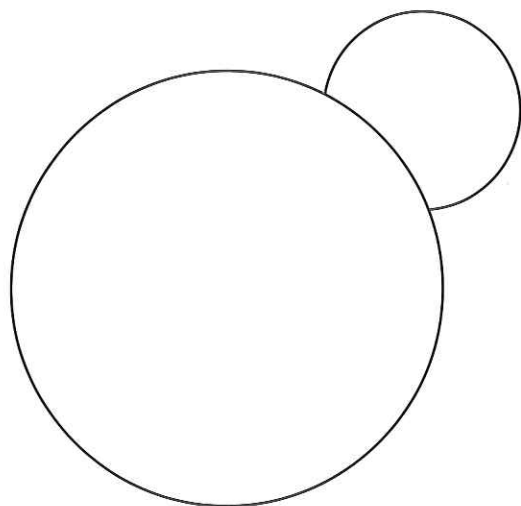


1. Find the model traction engine. Add to the picture:

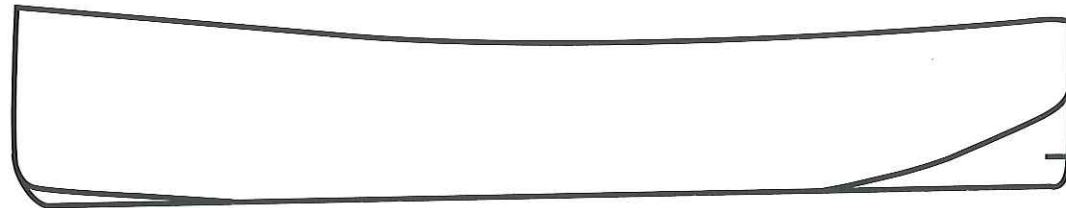
- the long boiler that holds the water to make steam
- the chimney for the fire that heats the water
- the seat and the steering wheel for the driver
- the bunker of coal
- the name of the engine



2. Why do the big wheels have ridges on them?

3. Go up the red stairs and past the Hall to The Medway Room. Find **Sherwin**, the stumpy-rigged barge. Add below:

- some masts and sails to make the barge move
- a rudder at the stern to steer the barge
- a leeboard (like a giant paddle folded against the hull) to stop it being blown sideways
- the name



The barge is called a '**stumpy**' because it has a short mast. Why is this important in the river around Rochester in particular?
