

C:\Users\meinhild\Documents\workingfiles\roost.bsg-ecology.com\Rochester\Rochester_Fig 1a_P1_LBSG.mxd

OFFICE: Cambridge
T: 01223 631635

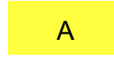




JOB REF: P18-388

PROJECT TITLE
ROCHESTER AIRPORT,
INNOVATION PARK MEDWAY

DRAWING TITLE
Figure 1a: Phase 1 Habitat Map,
Parcels 1 and 2

DATE: 29.08.2018 CHECKED: AH SCALE: 1:2,500
DRAWN: MS APPROVED: HB STATUS: FINAL

LEGEND

- | | | | |
|---|-------------------------|---|--------------|
|  | Site boundary |  | Dense scrub |
|  | Amenity grassland |  | Tall ruderal |
|  | Hardstanding |  | Fence |
|  | Semi-improved grassland | | |



C:\Users\meinhild\Documents\working\files\roost\bsg-ecology.com\Rochester\Rochester_P1_BSG.mxd

OFFICE: Cambridge
T: 01223 631635

JOB REF: P18-388

PROJECT TITLE
ROCHESTER AIRPORT,
INNOVATION PARK MEDWAY

DRAWING TITLE
Figure 1b: Phase 1 Habitat Map,
Parcels 3 and 4

DATE: 29.08.2018

CHECKED: AH


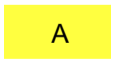



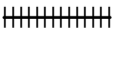




SCALE: 1:1,000

DRAWN: MS

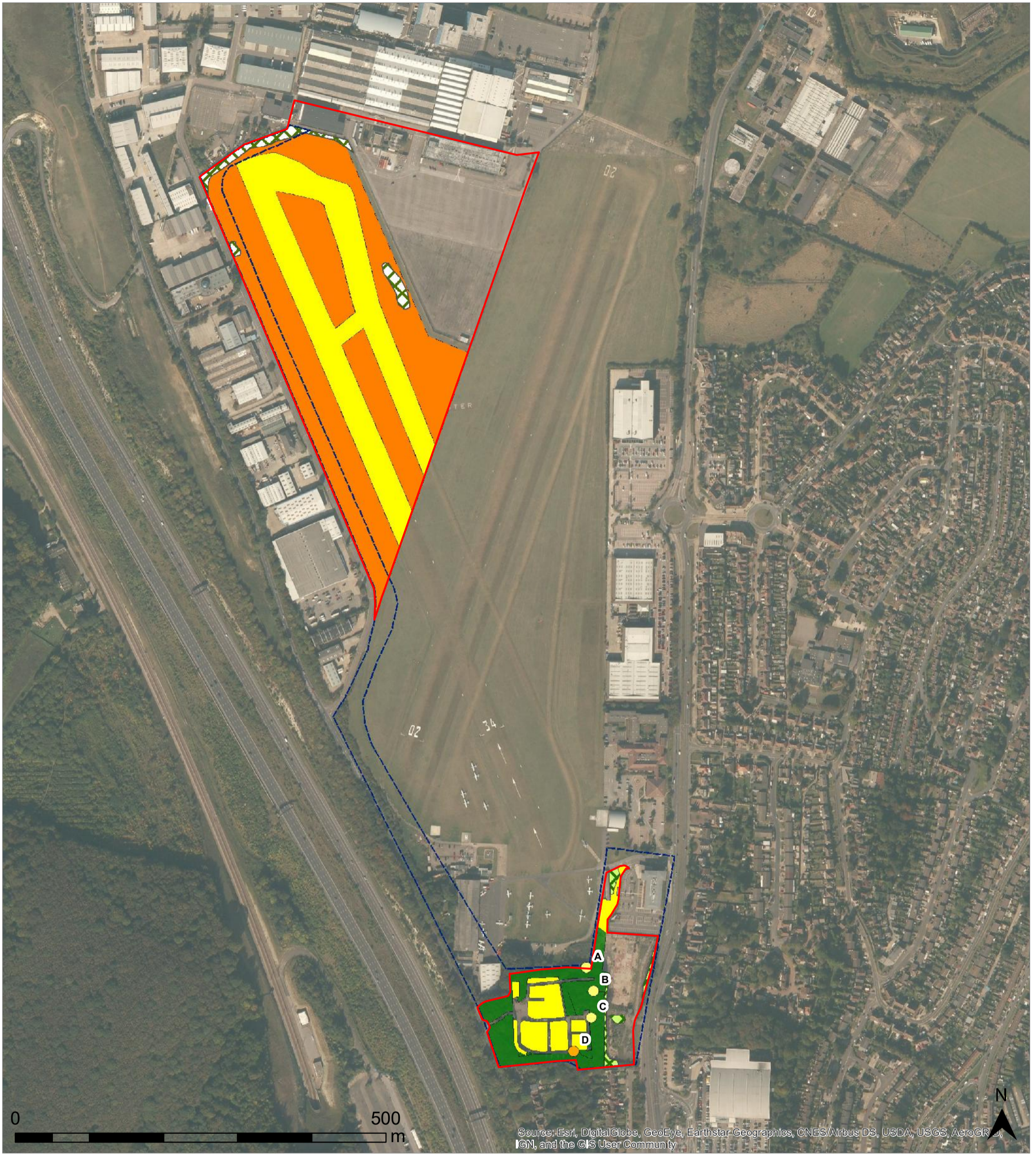
APPROVED: HB

STATUS: FINAL

LEGEND

- | | | | |
|---|----------------------|---|-------------------|
|  | Site boundary |  | Amenity grassland |
|  | Broadleaved woodland |  | Building |
|  | Dense scrub |  | Fence |
|  | Tall ruderal |  | Target note |
|  | Hardstanding |  | Scattered tree |

C:\Users\jcl\Documents\working\file\roost\big-ecology.com\623 Rochester\constraints plan.mxd



OFFICE: Cambridge
T: 01223 631635

JOB REF: P19-623

PROJECT TITLE
ROCHESTER AIRPORT,
INNOVATION PARK MEDWAY

DRAWING TITLE
Figure 2: Location of management prescriptions

DATE: 20.09.2019 CHECKED: PN SCALE: 1:5,000
DRAWN: COH APPROVED: PS VERSION: 1.1

LEGEND

Site boundary

Prescription 1A

Broadleaved woodland

Tree with low potential to support roosting bats

Tree with moderate potential to support roosting bats

Prescription 1B

Dense scrub

Dense scrub (dormouse likely present)

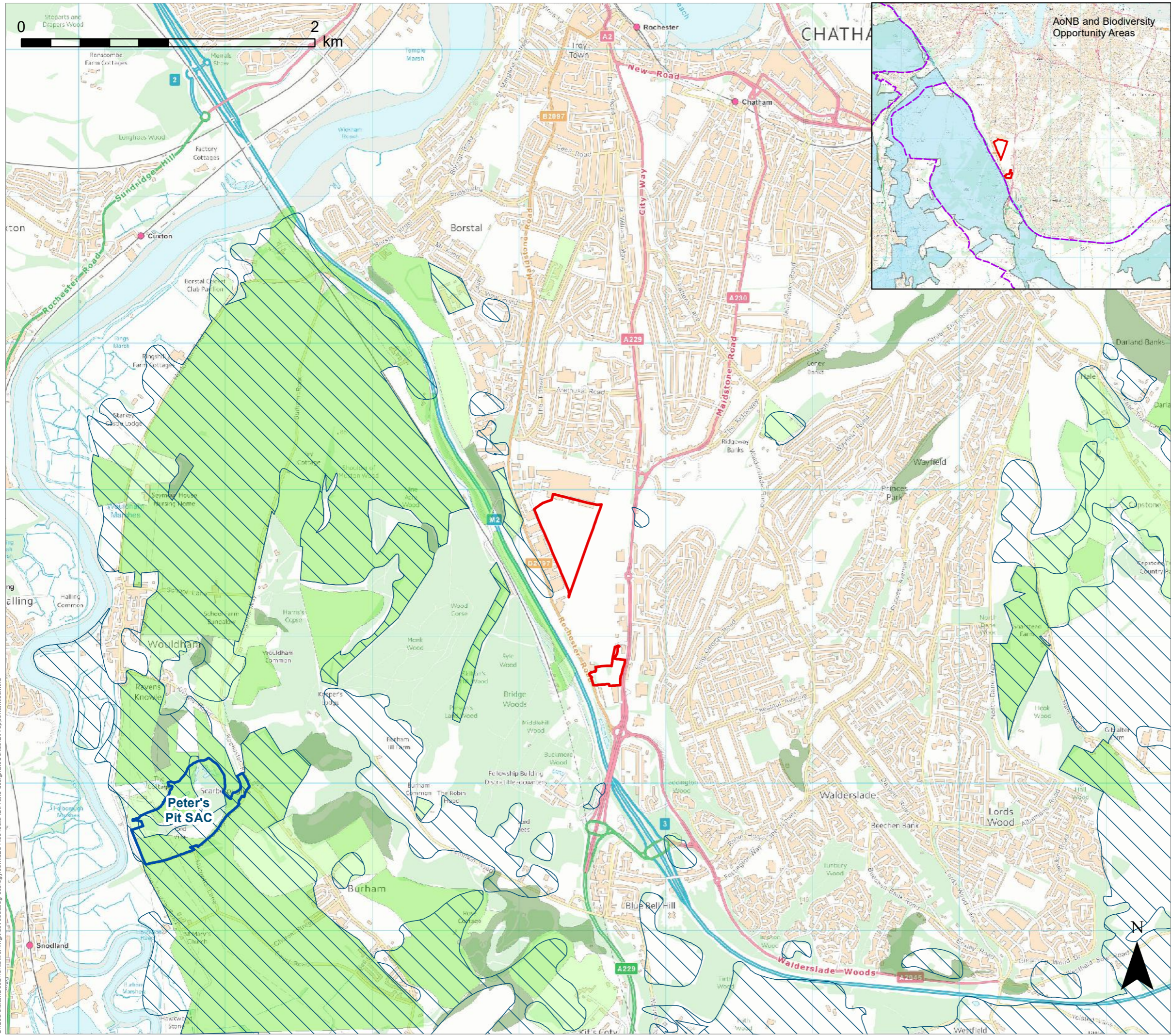
Prescription 1C

Semi-improved grassland

Amenity grassland

Prescription 1D

Area where light spill will be minimised during construction



LEGEND

- Site boundary
- Areas of Outstanding Natural Beauty
- Biodiversity Opportunity Areas
- Special Area of Conservation (SAC)

Habitat creation opportunities (derived from the Kent Landscape Information System habitat opportunities resources)

- Neutral grassland habitat opportunity (medium)
- Chalk grassland habitat opportunity (greatest)
- Chalk grassland habitat opportunity (medium)
- Chalk grassland habitat opportunity (minor)

BSG | ecology

OFFICE: Cambridge
 T: 01223 631 635
 JOB REF: P19-022

PROJECT TITLE
**ROCHESTER AIRPORT,
 INNOVATION PARK MEDWAY**

DRAWING TITLE
Figure 3: Opportunities for biodiversity enhancement

DATE: 16.09.2019 CHECKED: PS SCALE: 1:25,000
 DRAWN: COH APPROVED: PS VERSION: 1.1

Copyright © BSG Ecology

No dimensions are to be scaled from this drawing. All dimensions are to be checked on site. Area measurements for indicative purposes only.

This drawing may contain: Ordnance Survey material by permission of Ordnance Survey on behalf of the Controller of Her Majesty's Stationery Office © Crown Copyright 2019. All rights reserved. Reference number: 10048980

OS Open data © Crown copyright and database right 2019 | Aerial Photography © Esri

Sources: BSG Ecology survey data; habitat opportunity data derived from Kent Landscape Information System

C:\Users\clan\Documents\workingfiles\roost\ecology\com\623 Rochester\BIA and designated sites\BIA opportunities.mxd