
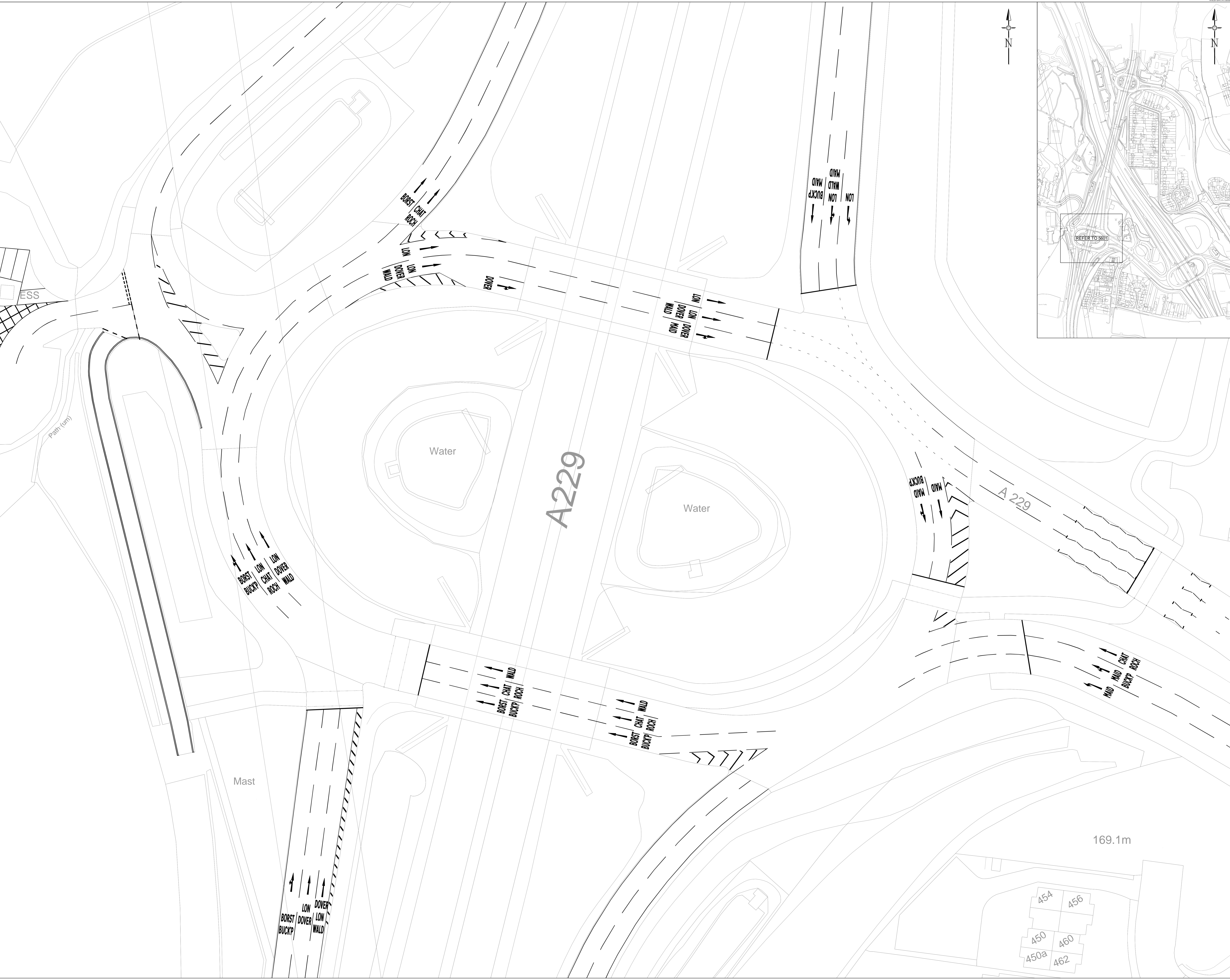
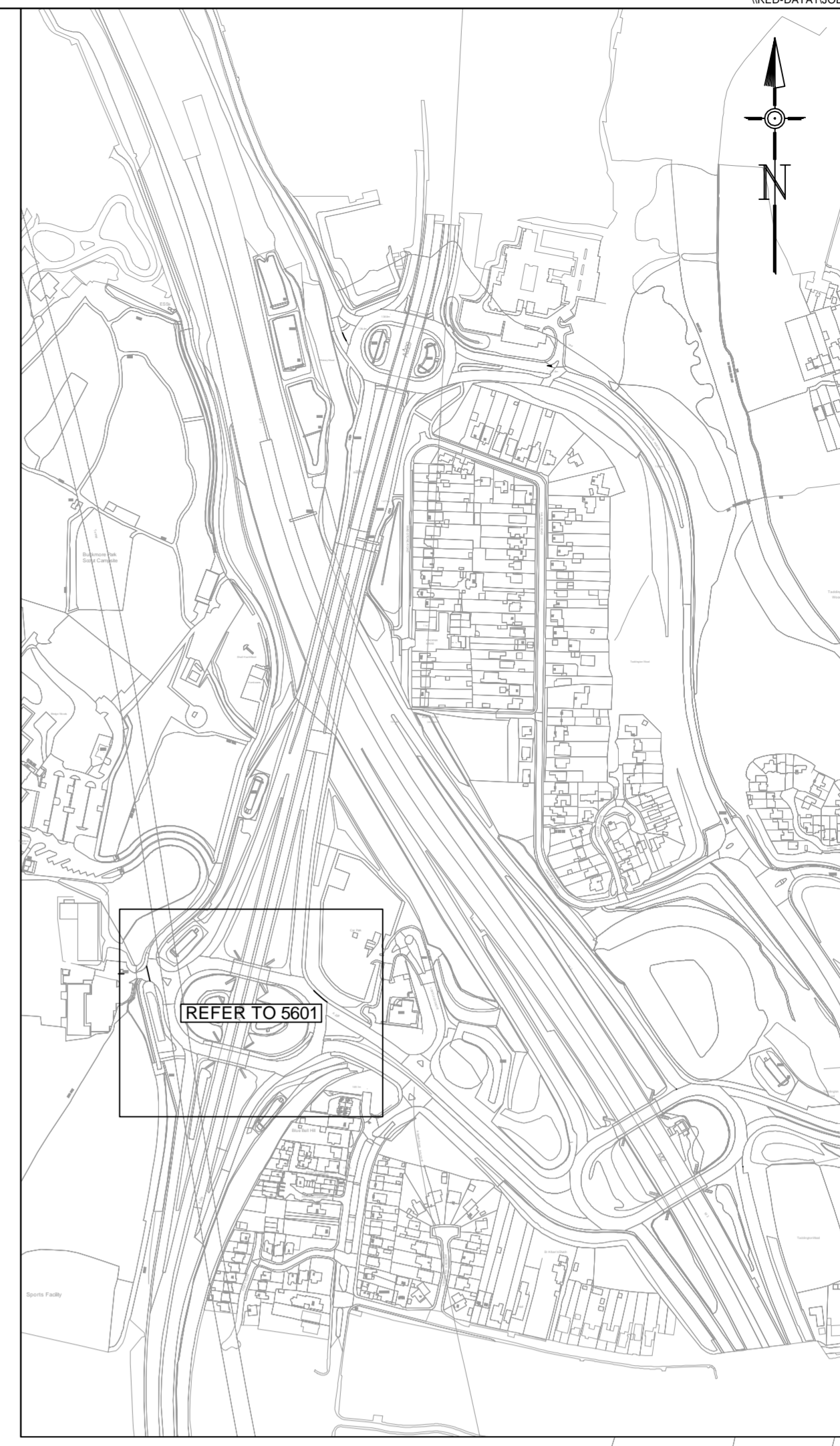


- Notes**
- Do not scale from this drawing on print or electronically. Work from figured dimensions only.
 - No deviation from the details on this drawing is allowed without CampbellReith's prior permission in writing.
 - Read this drawing with all Architects, Service Engineers and CampbellReith's relevant details, specifications and drawings.
 - All work is to be done in accordance with the relevant specifications issued by CampbellReith, British Standard Codes of Practice, Statutory Requirements and the Contract Documents.
 - Drawing status:**
P- Preliminary Evolving drawings for approvals, tenders, billings etc.
C- Construction Fully developed drawings issued under instructions for construction.
 - Only status **C** drawings to be used for construction.
 - Suitability code:**
Work in progress
S0 - Work in progress
Shared (Non-contractual)
S1 - For coordination, **S2** - For information, **S3** - For internal review and comment, **S4** - For construction approval
Documentation (For contractors purposes)
D1 - For Costing, **D2** - For Tender, **D3** - For contractor design, **D4** - For manufacture/procurement.
Construction
A - For construction, **B** - For construction but with comments (i.e. areas in abeyance), **CR** - Construction Record (Final Construction ONLY. Any deviations to that which is on site is not the liability of CampbellReith)
 - All existing topographical survey information shown or referred to is based upon topographical surveys prepared by 'Greenhatch Group', dated December 2013 and as supplied to CampbellReith - no warranty as to the accuracy of the information is given or implied.

LEGEND
 CLIENT OWNERSHIP BOUNDARY



Rev	Description	Date	By
P1	Issued for Information	08/07/20	HB

CampbellReith
 consulting engineers

London 020 7340 1700 Manchester 0161 819 3060
 Surrey 01737 784 500 Birmingham 01675 467 484
 Bristol 0117 916 1066 Dubai 00 971 4345 7088
 www.campbellreith.com

Job Title
INNOVATION PARK, MEDWAY

Client
MEDWAY COUNCIL

**EXISTING LAYOUT
 LORD LEES ROUNDABOUT**

Drawn by	Date made	Scale @ A0	Checked by	Suitability	CR Project
RH	06/20	1:250	GT	S0	12841

Project No.	Originator	Volume	Lvl/Loc	Type	Role	Number	Rev
12841	CRH	ZZ	XX	DR	C	5601	P1

169.1m

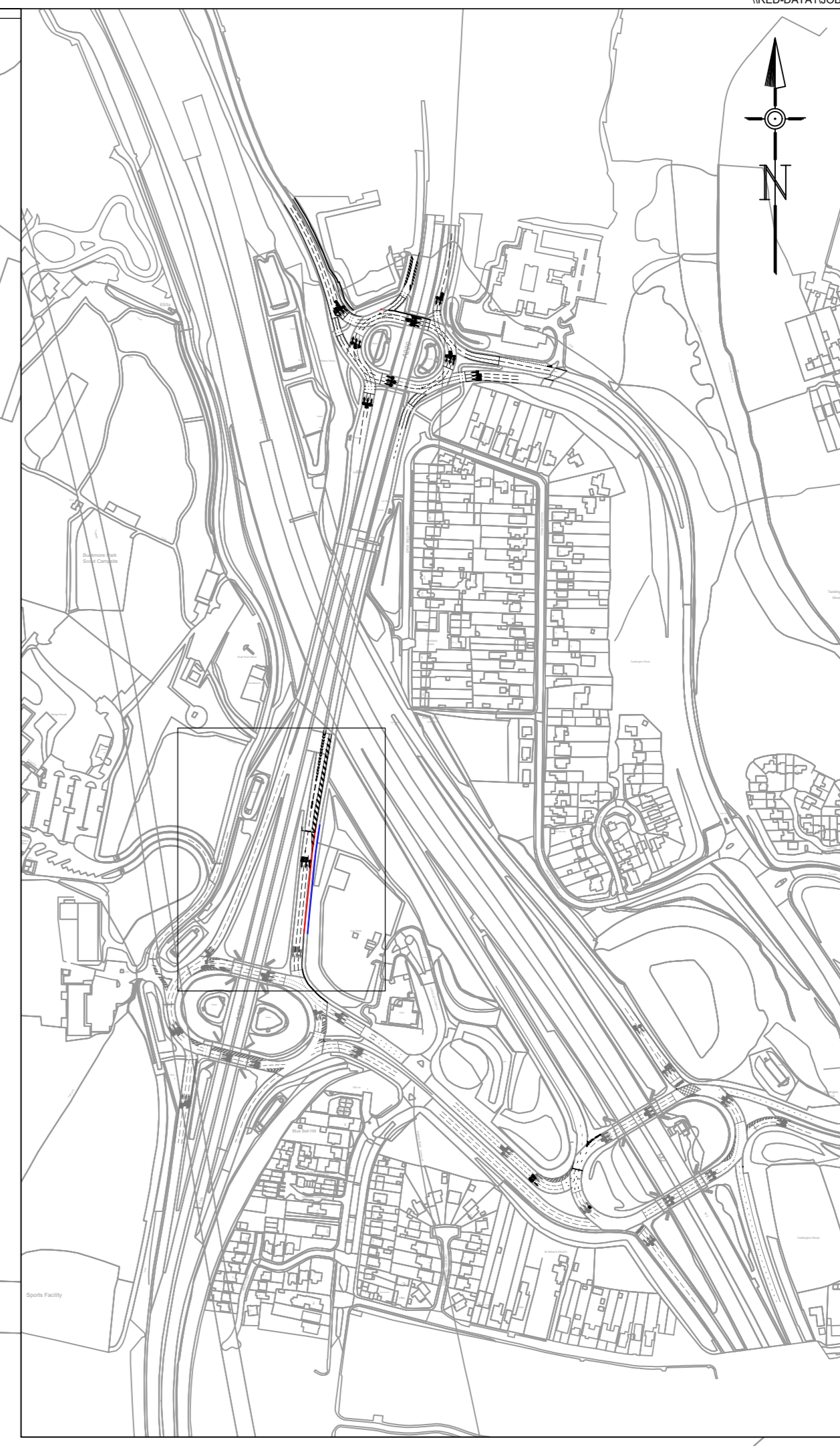
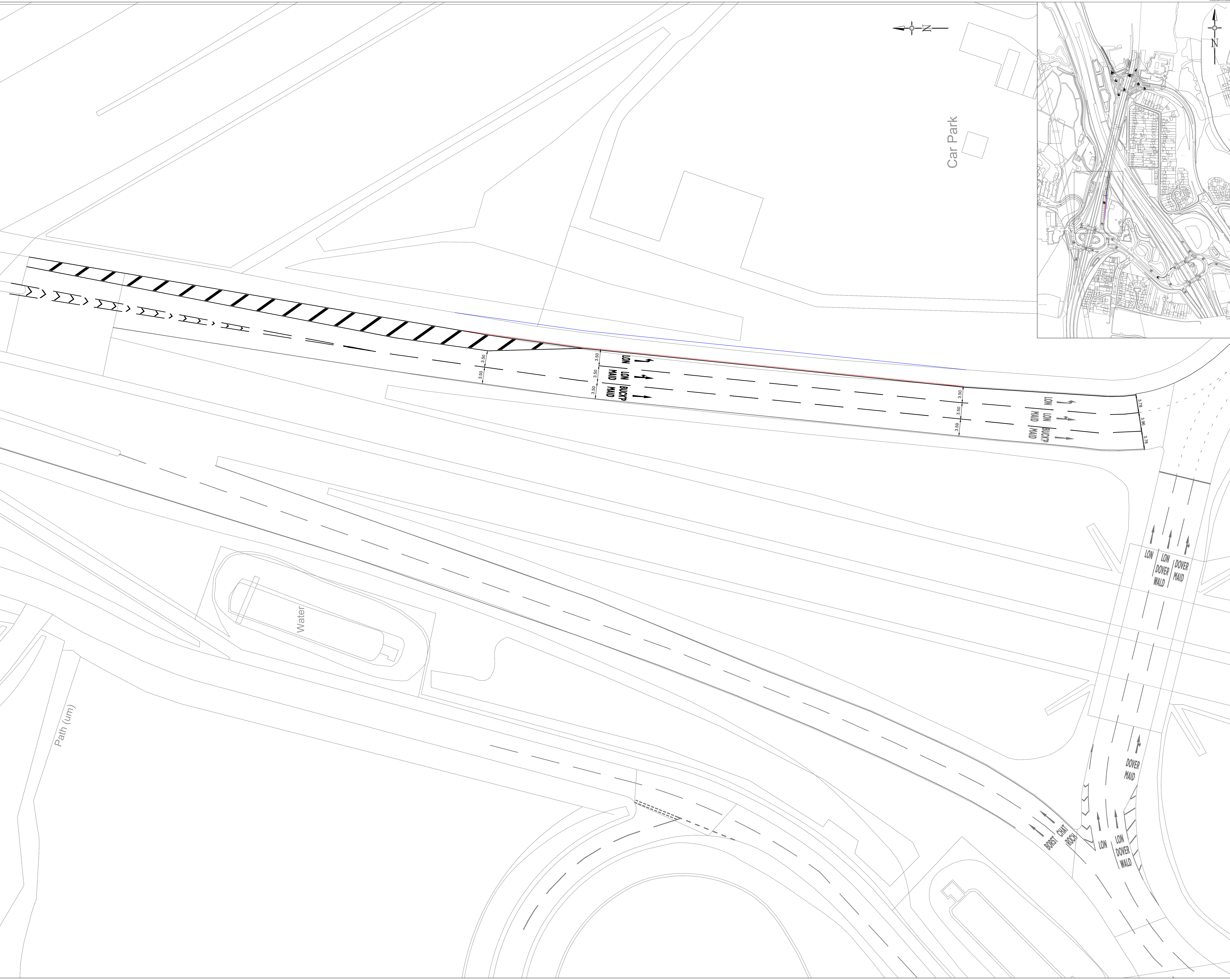
454 456
 450 460
 450a 462

Notes

1. Do not scale from this drawing on print or electronically. Work from figured dimensions only.
2. No deviation from the details on this drawing is allowed without CampbellReith's prior permission in writing.
3. Read this drawing with all Architect's, Service Engineer's and CampbellReith's relevant details, specifications and drawings.
4. All work is to be done in accordance with the relevant specifications issued by CampbellReith, British Standard Codes of Practice, Statutory Requirements and the Contract Documents.
5. Drawing status:
P- Preliminary Evolving drawings for approvals, tenders, billings etc.
C- Construction Fully developed drawings issued under instructions for construction.
6. Only status C drawings to be used for construction.
7. Suitability code:
 Work in progress
S0 - Work in progress
 Shared (Non-contractual)
S1 - For coordination, **S2** - For information, **S3** - For internal review and comment, **S4** - For construction approval
 Documentation (For contractors purposes)
D1 - For Costing, **D2** - For Tender, **D3** - For contractor design, **D4** - for manufacture/procurement.
 Construction
A - For construction, **B** - For construction but with comments (i.e. areas in abeyance), **CR** - Construction Record (Final Construction ONLY. Any deviations to that which is on site is not the liability of CampbellReith)

LEGEND

- EXISTING LINING TO BE RETAINED
- PROPOSED LINING TO BE INSTALLED
- PROPOSED KERBLINE
- PROPOSED BACK OF FOOTWAY



Rev	Description	Date	By
P1	Issued for Information	08/07/20	HB

CampbellReith
consulting engineers

London 020 7340 1700 Manchester 0161 819 3060
 Surrey 01737 784 500 Birmingham 01675 467 484
 Bristol 0117 916 1066 Dubai 00 971 4345 7088
 www.campbellreith.com

Job Title
INNOVATION PARK, MEDWAY

Client
MEDWAY COUNCIL

**PROPOSED LAYOUT
LORD LEES ROUNDABOUT**

Drawn by	Date made	Scale @ A0	Checked by	Suitability	CR Project
RH	06/20	1:250	GT	S2	12841

Project No.	Originator	Volume	Lvl/Loc	Type	Role	Number	Rev
12841	CRH	ZZ	XX	DR	C	6601	P1