



Your Gillingham, Your Say

An opportunity for Gillingham

We have the opportunity to bid for funding to help Gillingham but we need your thoughts, feedback and ideas to make sure we build the things that you need and want.

The more you can support the bid to request funding for the proposed projects, the more likely we are to be successful and help improve Gillingham.

What is the Levelling Up Fund?

The Levelling Up Fund is government investment being made available to places across the UK. Central government has invited councils to submit proposals on potential transport projects and a decision will be made on which councils and projects will receive funding, based on a set of measures.

We are applying to the Levelling Up Fund to help bring investment into Gillingham to make essential improvements to the town and its High Street. The bid will be submitted in July and we find out in autumn 2022 whether we have been successful.

What are we bidding for?

A series of spaces have been identified for improvements in Gillingham This includes creating new routes for people to walk and cycle, a more pleasant town centre for shopping, new places to learn, play and socialise, and helping people to develop new skills. Together these improvements will help to connect Gillingham town centre to wider amenities and towns, and invest in our community.

Areas we are looking to improve:



Gillingham High Street



Disused railway - to be transformed into the Greenway



Connecting Gillingham and Medway



Encouraging walking and cycling



Child-friendly city



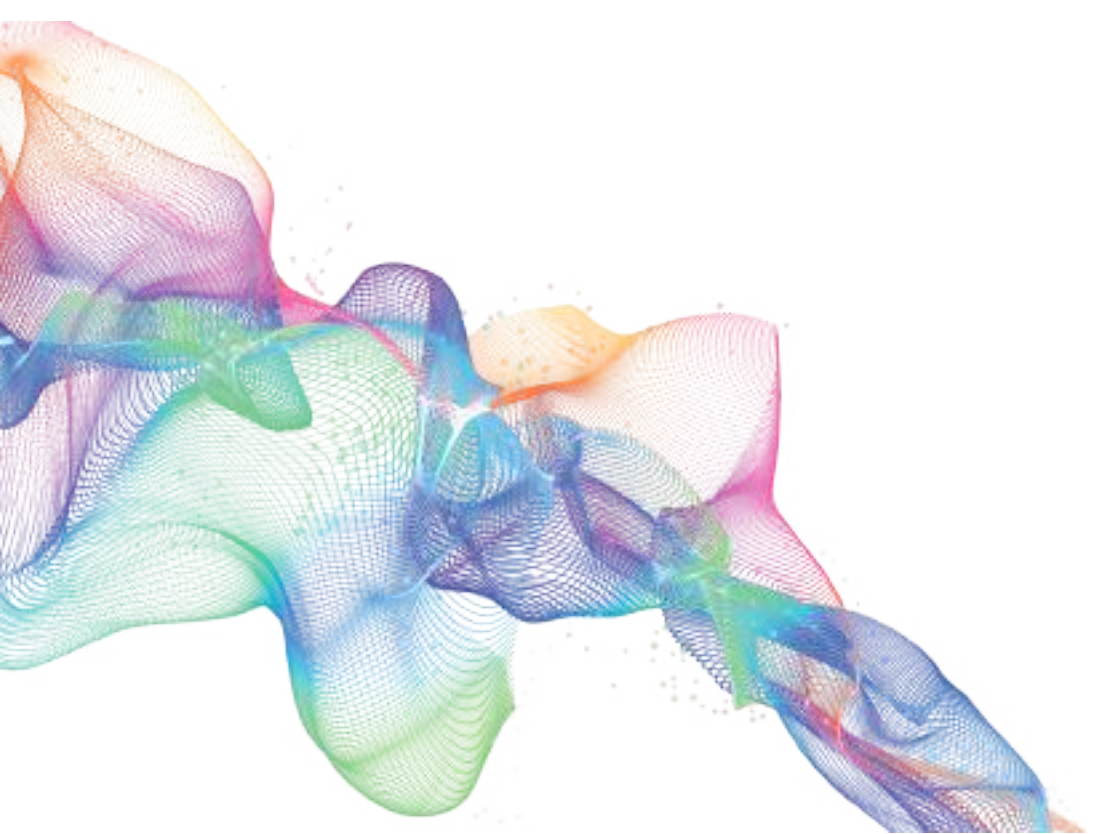
Creating new Greenspaces



Investing in your High Street

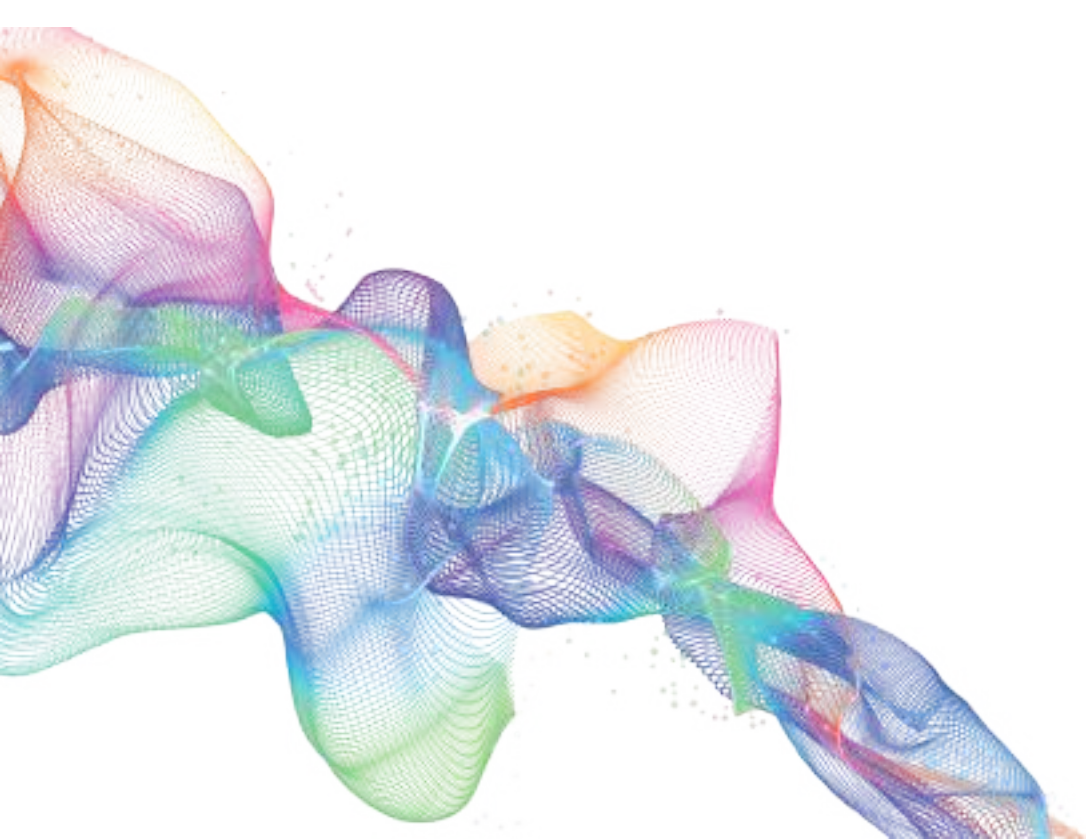
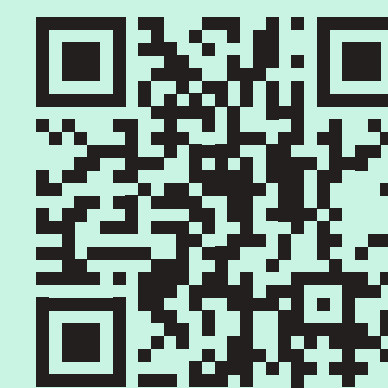


Skills development for local people



Jon Matthews Architects





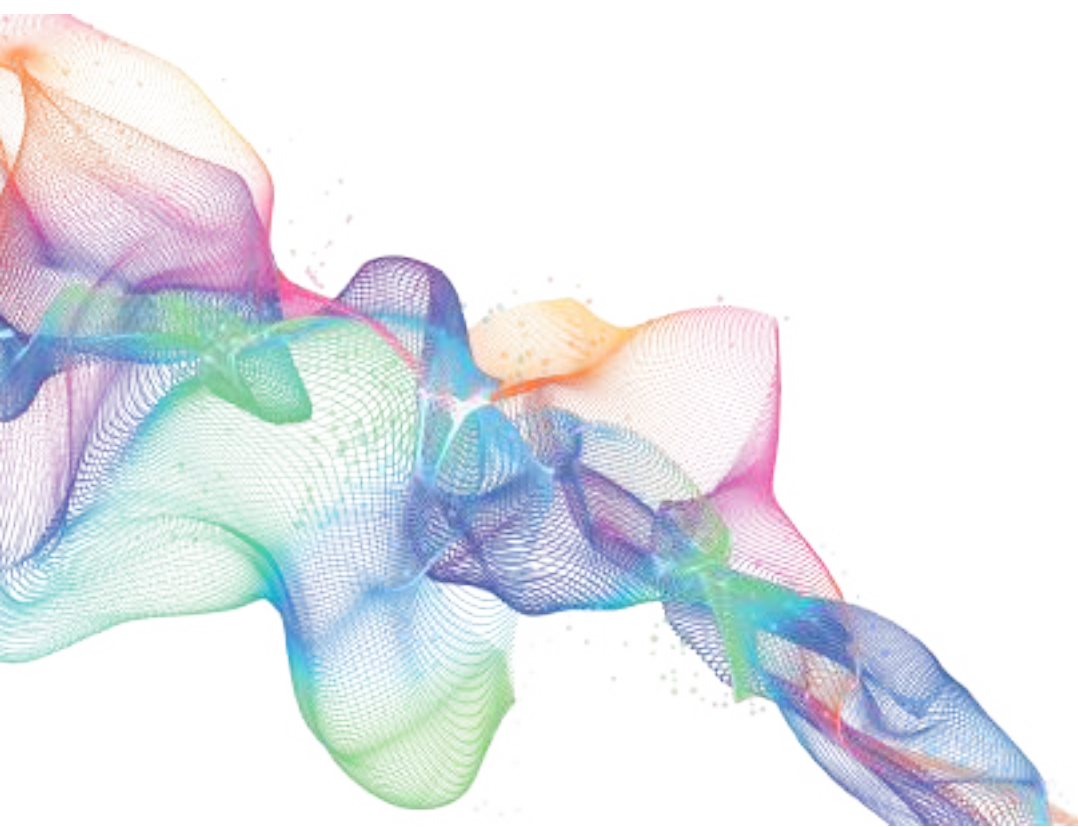


Our Vision

New walking and cycling routes

We are proposing a scheme that sees a disused railway track being brought into use by creating the Greenway, alongside brand-new high street public realm, with improved outdoor spaces for shops and cafés, play, seating, new planting, as well as cycling provision, better lighting and signage.

These routes would encourage using sustainable transport methods such as cycling and walking, connecting Gillingham to the waterfront. This package of work is intended to provide our community with enhanced public areas, provide additional green spaces and connect our communities, as well as reducing crime and boosting local pride.



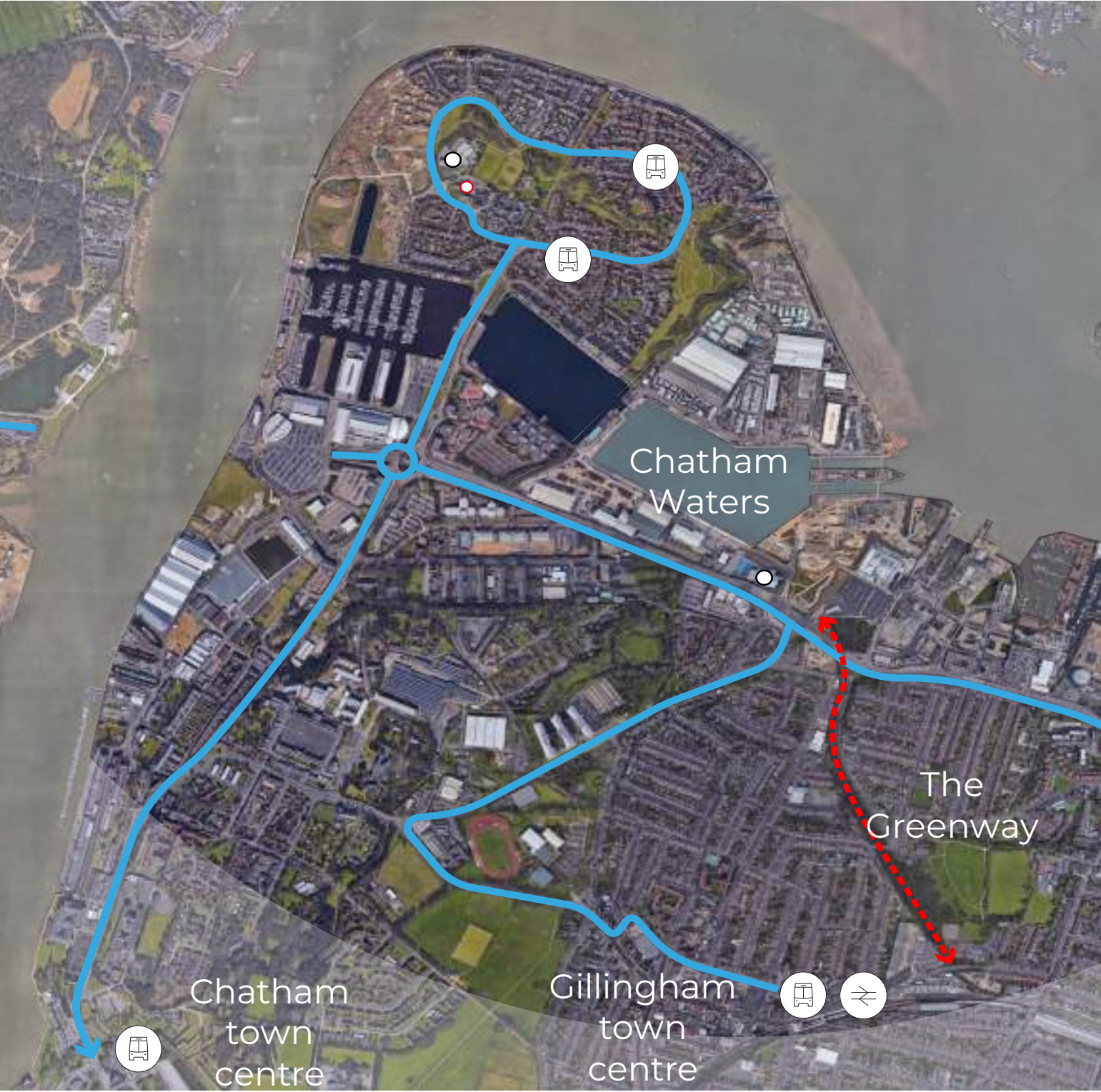
Jon Matthews Architects



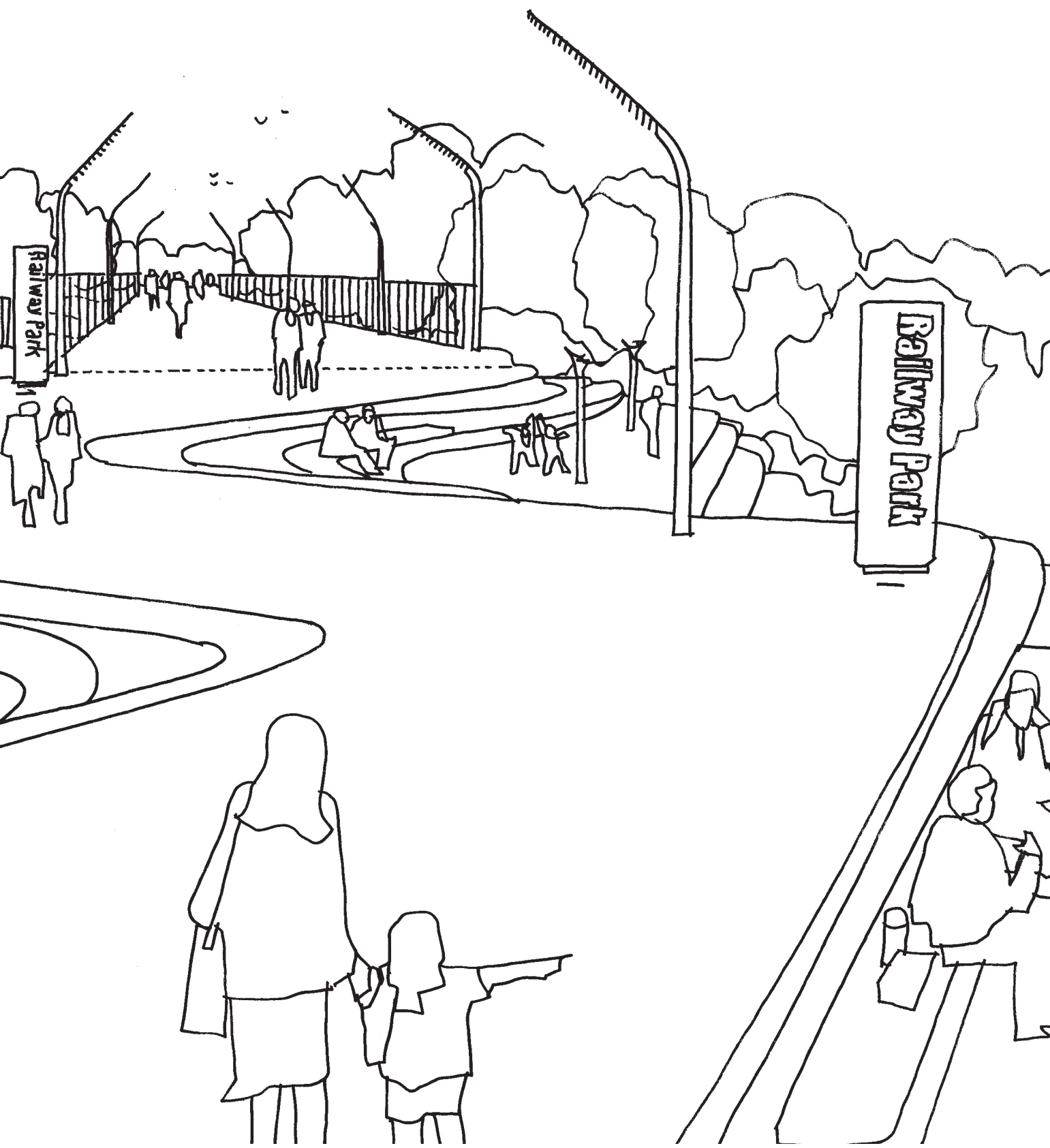
The Greenway



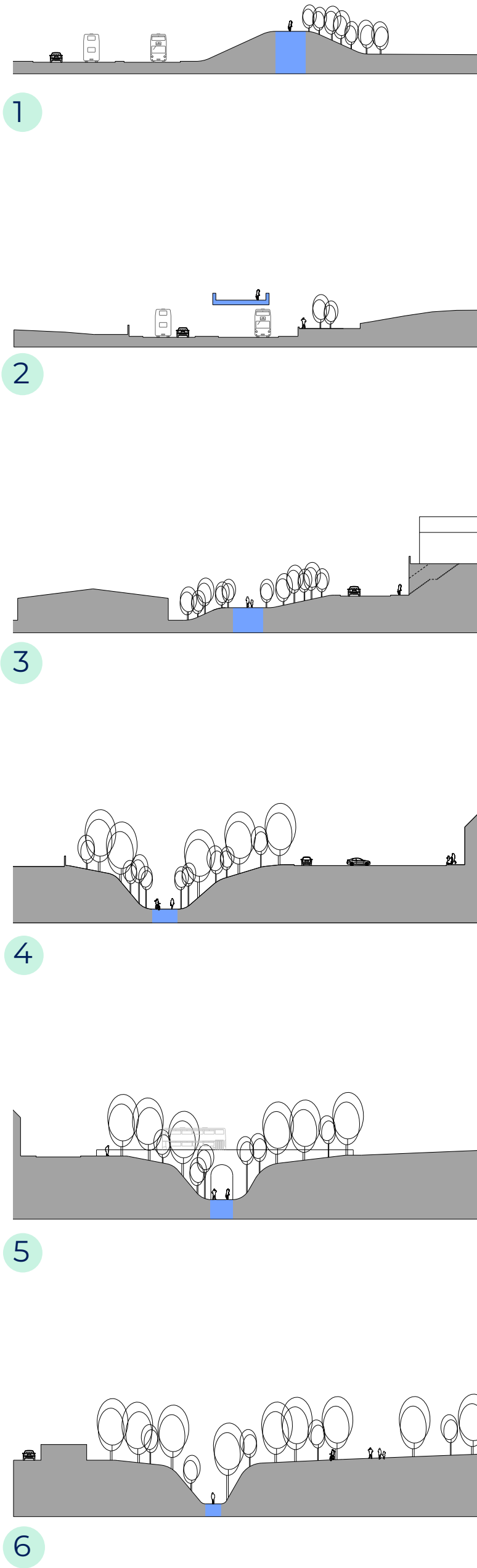
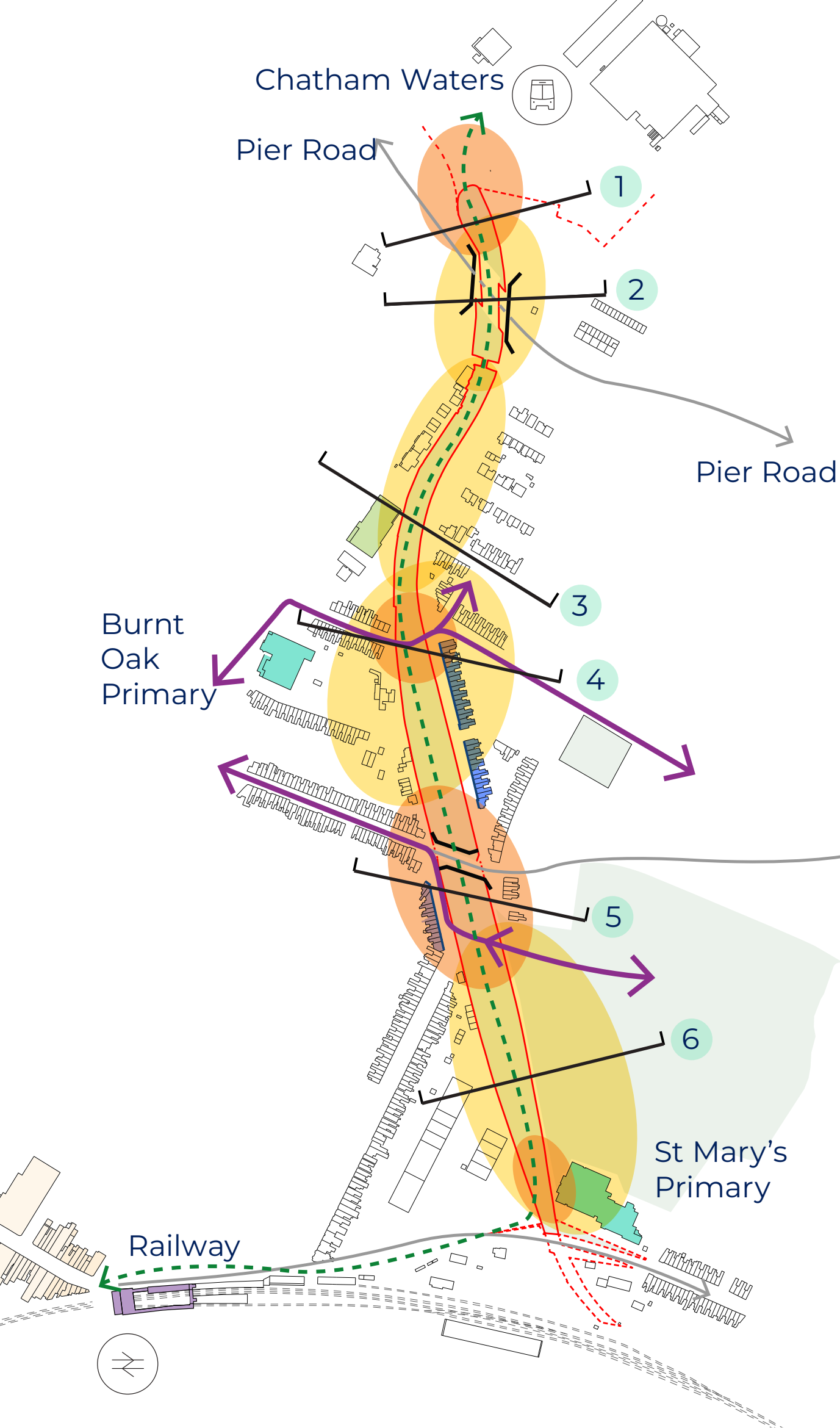
Our objective for the Greenway is to significantly improve the connectivity between Gillingham Station and Chatham Waters. We would do this by creating a cycling and walking corridor, opening up the current landscape in a user friendly manner and providing an additional attraction for existing residents, visitors and commuters. Our vision will transform the current ecological makeup of the site, preserving wherever practical the historical context of the railway. Beyond the site boundary, careful consideration has been given to the potential economic benefits to the wider area by breathing life into this forgotten space.



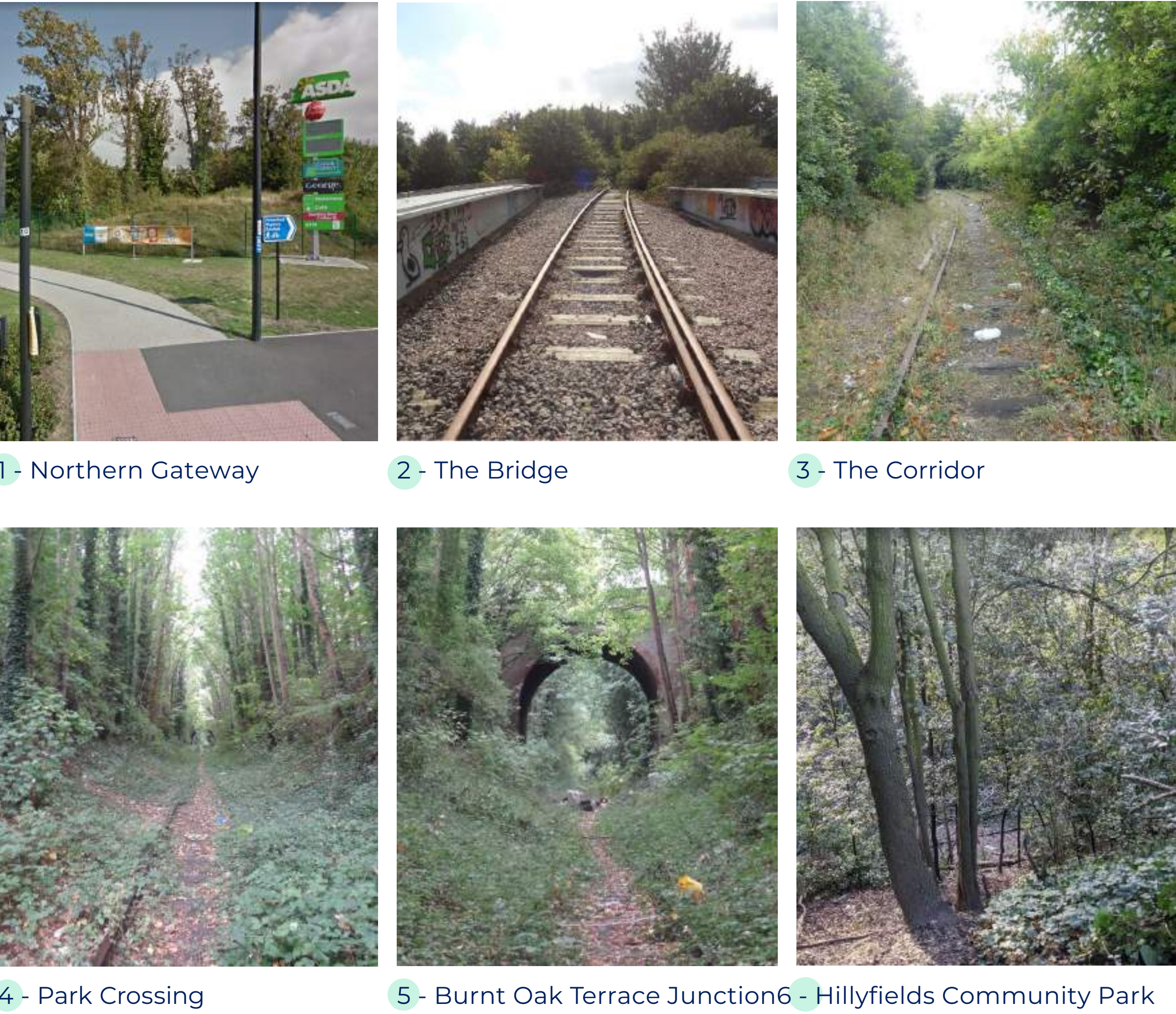
Site Location



Illustrative images and ideas:



The Greenway Site Existing Conditions



Jon Matthews Architects



The Greenway



We have approached the design of the Greenway cycle and pedestrian route and park from a position of working with the existing landscape, rather than against it, to maintain the site as a natural green corridor. This approach values and works with the biodiversity and will be developed in line with the future recommendations of the environmental surveys.

The aim is to retain as many of the existing trees on the site as practically possible, whilst also adding in new and varied planting that will improve biodiversity. The park that the cycle route creates is a resource for the community, a space to dwell, play, explore and learn to enhance their wellbeing. There are several schools overlooking the route, and with this in mind, the space is intended to become a valuable resource for education and sensory play. This approach will be developed through a series of workshops with the community, universities and schools to make sure it meets their needs and provides the spaces they want.

The design aims to improve links between the residential communities on either side of the historic railway cutting, creating new routes across the new park, linking communities. Safety and accessibility is a key driver. The cycle route should be safe to use at all times of day with accessible ramps at key strategic locations. The route will be well lit, with regular access and exit points. Primary spaces are created at points along the route, with good passive supervision from houses overlooking the track. Natural surveillance will be further improved by raising the ground level up to match that of the street wherever possible.



Northern Gateway Vision



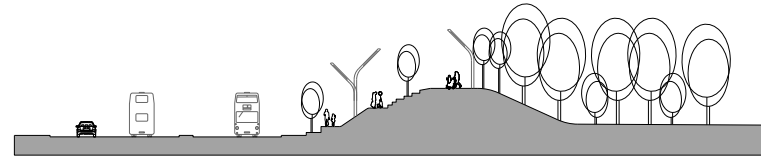
Park Crossing Vision

Illustrative images and ideas:



1 - Northern Gateway

Access from Pier Road / Asda

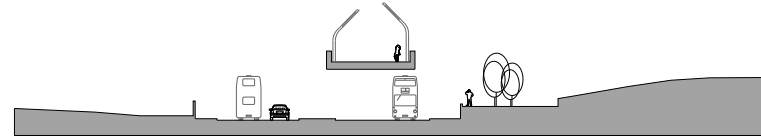


1



2 - The Bridge

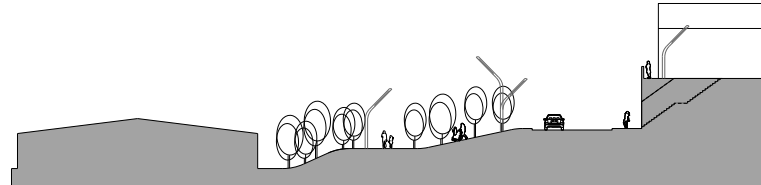
Preserving Heritage Assets



2



3 - The Corridor

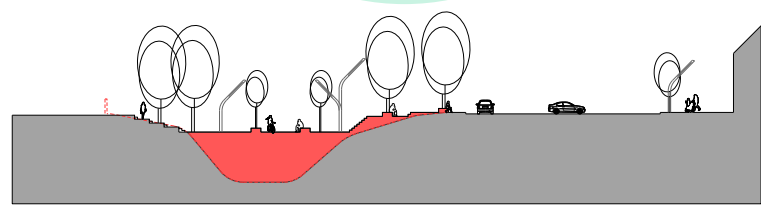


3



4 - Parkway Crossing

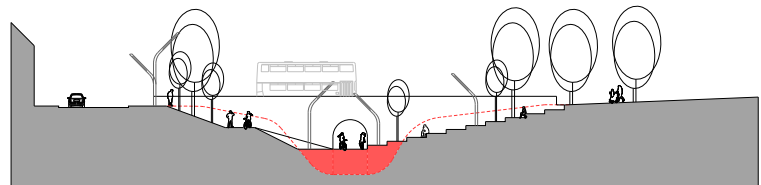
Connecting residential Communities



4



5 - Burnt Oak Terrace Junction

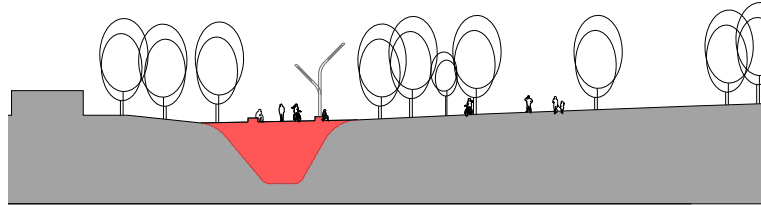


5



6 - Hillyfields Community Park

Connection to Railway Street



6



Jon Matthews Architects





The High Street

There is the opportunity to improve the High Street so that it becomes a more pleasant place to shop, socialise, play, and travel through.

Our ambition through these improvements would be to encourage greater footfall to the High Street and attract new businesses, which will benefit the wider community.

Planting

Existing trees are retained and new trees could be added to increase greening. Planting could be added underneath the trees to create small pocket gardens with benches.

Market

The existing market could be better organised with labelled plots, water and electricity supplies, and potentially increased in size.

Play

Small play spaces could be included between the planting so that children can play on their way along the High Street.

Cafe / Shop spill out

Cafes and shops could use their spaces between the planting for the customers. This helps to create a friendly, busy high street.

Furniture

Upgraded lighting, CCTV, cycle racks and benches.

Shared cycle route

A shared cycle route could be provided to encourage people to come to the town centre and stop at shops on their way to the station, school, or work.

Currently the High Street is underused and has a lot of potential for change. The images show how the High Street could be transformed to a more people-friendly place. Please tell us what you think.



Jon Matthews Architects





What's important to you?

Please help us to understand what things matter the most to you by placing stickers in the boxes.

You can also tell us any comments, and don't forget to fill in a questionnaire before you leave.

Thank you for your feedback.

Place a sticker below the images that matter most to you

Please tell us your comments



Better cycle routes



More green spaces



Improving pedestrian crossings



Child-friendly public spaces



Keeping fit outdoors



Skills development for local people



Attracting new business to the High Street



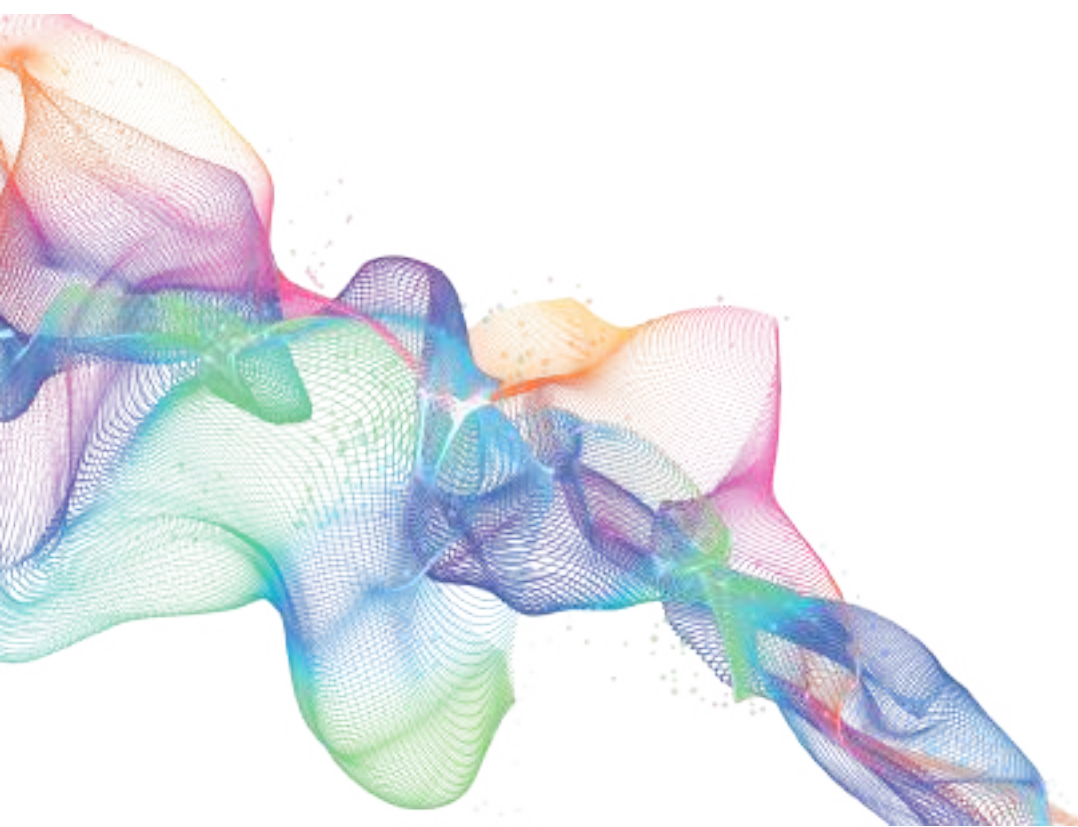
Improving safety for pedestrians



Greening the High Street



Improving Gillingham Market



Jon Matthews Architects

