

Regeneration, Culture and Environment Overview and Scrutiny Committee

BRIEFING NOTE – No. 10/17

Date: 13 June 2017

Briefing paper to: All Members of the Regeneration, Culture and Environment
Overview & Scrutiny Committee

Purpose:

To inform Members of the year on year comparison of fly tipping data after the introduction of bulky waste charging from 1 April 2016.

Background

Under the Controlled Waste Regulations 2012, a council can charge residents for the collection (but not disposal) of domestic household waste items – typically furniture and appliances - that:

- do not fit in a cylindrical container 750mm in diameter and 1m in length and/or
- weigh more than 25kg

During 2015/16 residents could receive one free collection of up to three items of bulky waste per household in any rolling 12 month period. If residents required additional bulky waste collections they would thereafter be charged £19 per collection of up to three items.

From 1 April 2016, the Council introduced a £20 charge for the collection of up to three bulky waste items. Residents are able to receive as many bulky waste collections as they wish, each charged at the same rate.

Prior to 1 April 2016, Medway was the only authority in Kent to offer free bulky collections to all households.

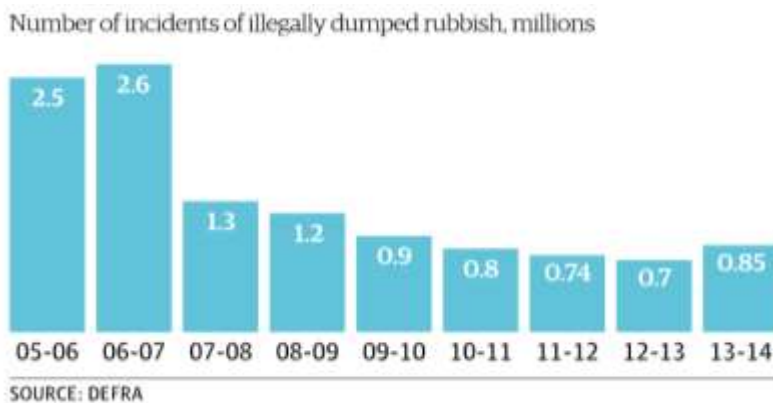
Medway has three household waste and recycling centres whereby residents can take and dispose of all items collected under the bulky waste service.

Additionally, Medway's third sector partners (The Neighbourhood Furniture Store and Abacus) will collect reusable furniture that can be resold.

A national research paper published in 2011, *'Introducing charges for bulky waste collection? What to consider – a guide for local authorities in England'* ¹ found that fluctuations in fly tipping could be affected by a number of unrelated factors and policies that act independently but at the same time as a change to a bulky service, such as:

- the banning of side waste
- increased enforcement action
- greater emphasis on third sector activity
- recession

However, as shown below, during a 5-year period from 2005 when it is estimated a further 9% of collection authorities moved to a charging system, fly tipping incidents decreased significantly¹



Validation of data by Government

All Local Authorities have to complete a Government return on waste information e.g. landfill, recycling and fly tipping at least quarterly. This data is then reviewed by Defra and then validated. The publication of validated information for 2016/17 is not expected until November 2017 (landfill and recycling) and February 2018 (fly tipping). The data in this briefing note has not therefore been validated by Defra.

Advice and analysis

There are many different types of fly tipping. Some are single items such as mattress or items of furniture, which can easily be identified as 'bulky waste'. Others are more complex and made up of a variety of items, more in line with house clearances by disreputable waste clearance firms/individuals or commercial waste. Medway Council takes a strong enforcement stance towards those who fly tip.

¹ Introducing charges for bulky waste collections. Caroline Lee-Smith, Sept 2011; <http://www.bulkyguru.co.uk/wp-content/uploads/2009/11/Introducing-charges-on-bulky-waste-collections.pdf>

The table below compares the Defra fly tipping categories for those items which could have received a bulky waste collection by type for 2015/16 to 2016/17.

Defra Category	2015/16	2016/17	% Change
White Goods	329	292	-11%
Other electrical	223	166	-25.6%
Other household	1951	1861	-4.6%

The table below compares 2015/16 bulky waste collection numbers with data from 2016/17 when charges for all items were introduced.

	2015/16	2016/17	% Change
Q1	4720	2772	-41%
Q2	4558	2962	-35%
Q3	4744	2545	-46%
Q4	6592	3012	-84%
Total	20614	11291	-45%

The introduction of charges will have had some effect on the usage of HWRC's where residents may chose to take items free of charge rather than pay for a kerbside collection. The table below shows how tonnages have changed for the bulky electrical items, wood waste and residual waste collected at the HWRC's .

	15/16	16/17	% Change
Fridges	188	255	36%
Large electrical items	150	180	20%
TVs	242	227	-6%
Metal items	1491	1633	9.5%
Wood	5741	6219	8%
Residual waste	7764	8563	10%

Conclusion

The evidence collected supports the national trends that charging for bulky waste introduced in 2016-17 has not increased the number of fly tipping incidents.

Lead officers:

Sarah Valdus
 Head of Waste Services
 Tele no. 01634 331597
 Email: sarah.valdus@medway.gov.uk

Tim England
Head of Safer Communities and Greenspaces
Tele no. 01634 333534
Email: tim.england@medway.gov.uk

Anna Marie Lawrence
Head of Regeneration Culture and Environment Performance & Intelligence
Tel. No: 01634 332443
Email: annamarie.lawrence@medway.gov.uk